


Chapter 18 Table Display

18.1 Create a new table window

Click on “New window” button , select “Table Window” (image 18-1) to create a new one,(As shown in image 18-2).

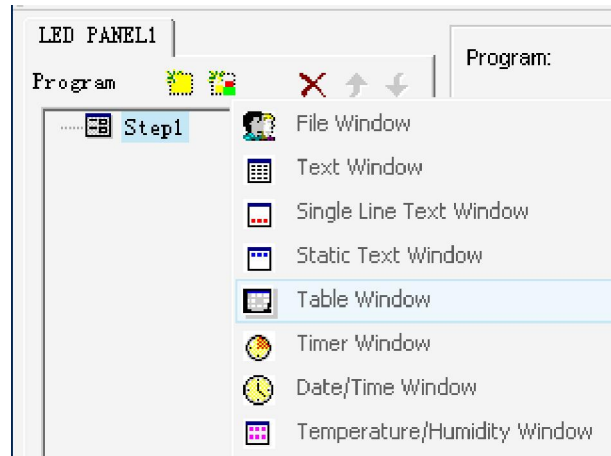


Figure 18-1

18.2 Set up Table Window

As shown in image 18-2, the upper part is for setting up program properties.

Name: program name

Frame: choose frame and color

Starting point X: x-coordinate of starting point

Starting point Y: y-coordinate of starting point

Width: set up width of program

Height: set up height of program

Lock: lock program window to prevent it from moving.

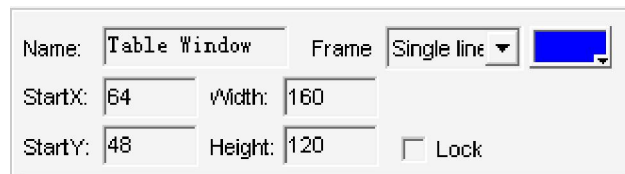



Figure 18-2

18.3 Insert and edit table

Click on “Add Table” button  in lower part of image 18-2 to open the “edit table” dialog box, (As shown in image 18-3).

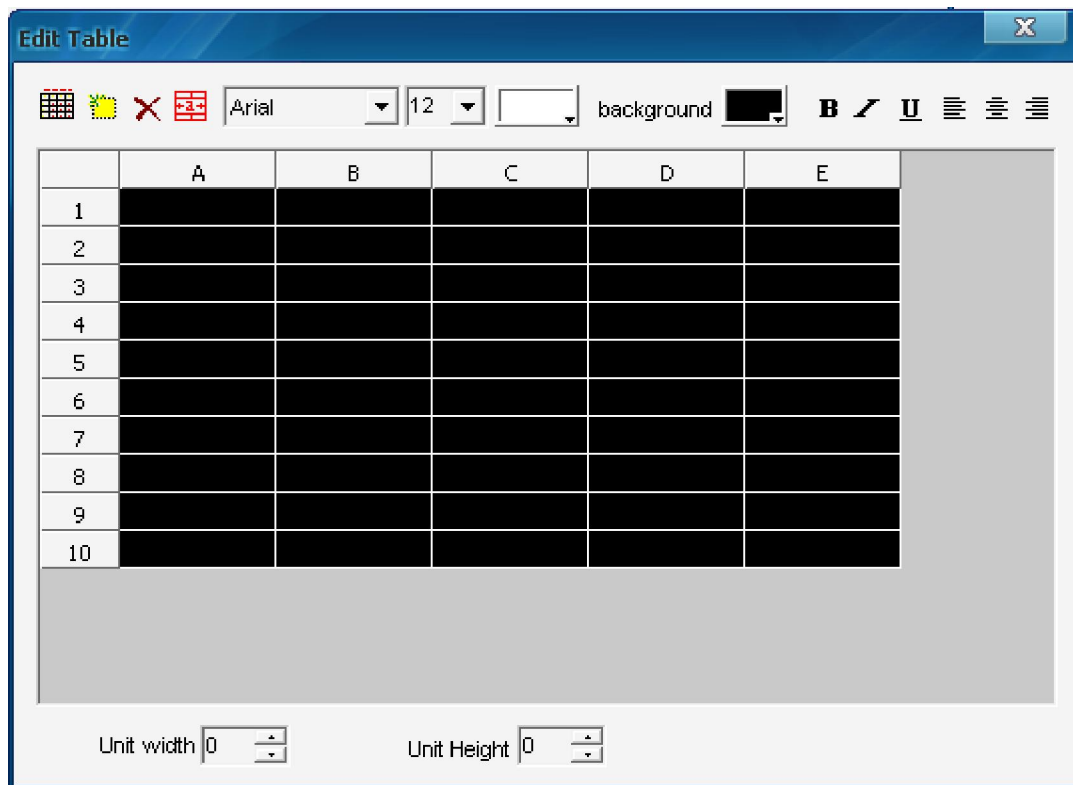



Figure 18-3

Toolbar

“table property” button : Set up table properties


“Insert table” button : Insert rows or columns.

“Delete table” button : Delete rows or columns.

“Split/Merge” button : Split rows or columns/combine rows or columns.

Those to the right are mainly used for type-editing; users can change Font, Size, and Color, Background color, mode and alignment.

Set up table properties

Click on “Table property” button , to open “table property” dialog box, as shown in image 18-4. Users can change settings including title, with/without title, title’s Font, size, mode, color and table’s background color, grid line color, table drawing effect, speed, staying time and lock the row and column numbers.

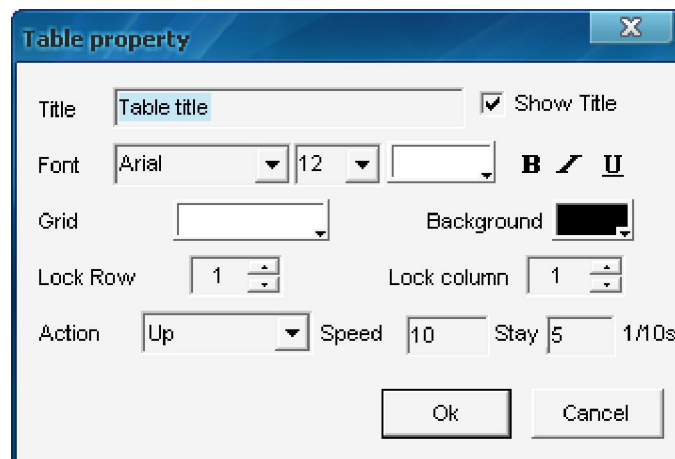



Figure 18-4

Insert table

Click on “insert table” button  to open “add table” dialog box, as shown in image 18-5, select insert type, quantity, and insert position (to current position or to end), click “ok”.

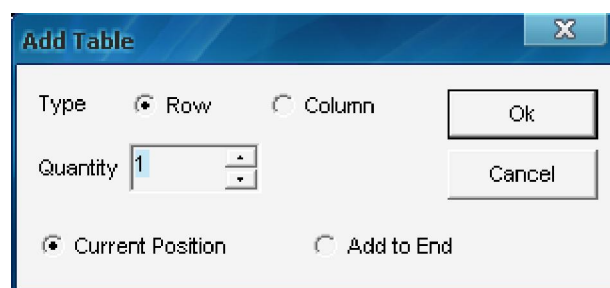



Figure 18-5

Delete table

Click on “delete table” button , to open “delete table” dialog box, as shown in image 18-6. Select delete row or column and then click on “ok”.

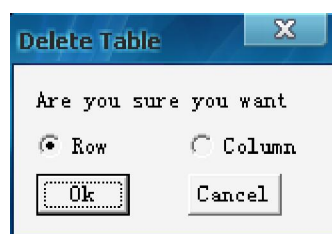



Figure 18-6

Split/Merge

Select table cells that you want to combine, click on “Slit/Merge” button  to combine, as shown in image 18-7.

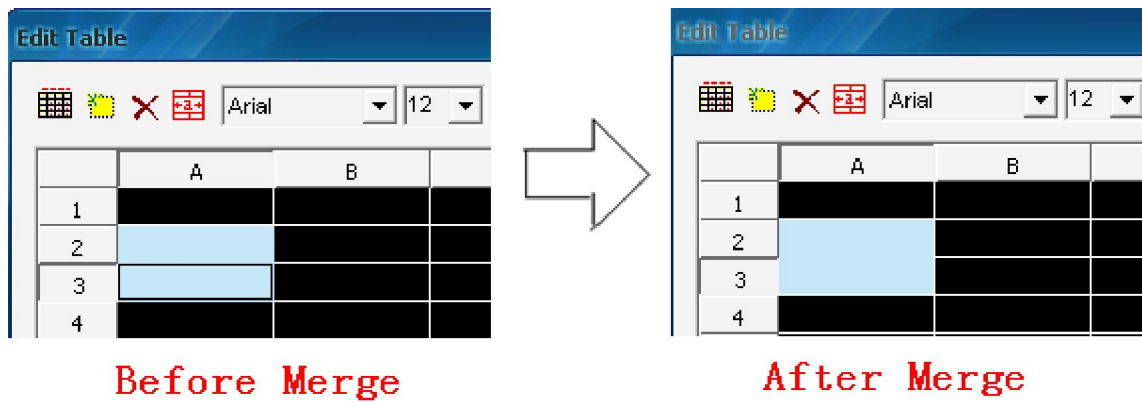



Figure 18-7

Select cells that you want to split, click on “Slit/Merge” button , as shown in image 18-8.

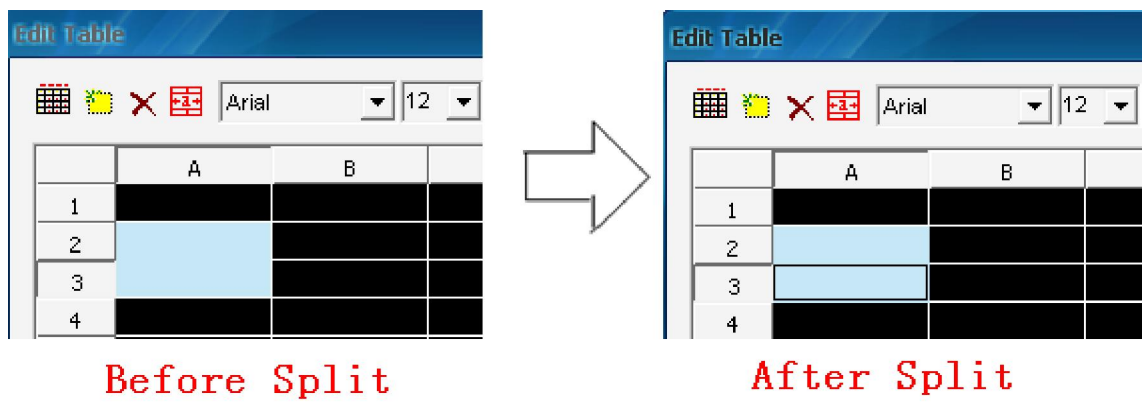


Figure 18-8